

MDVR8102S

4CH H.265 AI Dual SD Card 1080P AI Mobile DVR



QOHO | WWW.QOHOVISIONS.COM

MDVR8102S

4CH H.265 AI Dual SD Card 1080P AI Mobile DVR

The 8102S is a compact car-mounted hard drive video recorder with 4 1080P cameras. It has a built-in 4G global positioning system and WiFi, and can be installed in a car to capture the front road and interior views. It also has an advanced driving assistance system camera to ensure safe driving. Additionally, it has a driver monitoring system camera to measure the driver's condition on the bike lane. Users can also upgrade to a blind spot detection system. If you want to travel in an absolutely safe environment, this is a good optional feature.

- Industrial grade design
- Support remote live view in real-time
- Mobile phone configuration, easy setting
- Support WIFI,4G/5G,mobile network automatic switching
- Support dual TF cards, maximum 512GB*2
- Two-way intercom between driver and Platform CMSV6 & Wialon platform or third party platform with SDK/API
- AI ADAS+DMS or BSD and max 4 channel 1080P Remote view



Features

Specifications

Applications

Accessories

CMSV6

The CMSV6 monitoring client is capable of conducting real-time monitoring and management of vehicles. It can accurately locate the specific position of the vehicle, and drivers can observe the vehicle information in real time at any time.

Driver Assistance (ADAS)

ADAS intelligent assisted driving system can monitor the distance between the vehicle and the preceding one in real time, issue collision warnings, and alert the driver about lane changes. It also gives warnings to the driver.

Video

It adopts the H.265 compression format, supports full HD 1080P recording, and is equipped with the high-performance NovaTek NT98528 processor, ensuring efficient storage and smooth video streaming transmission.



BSD (Optional)

Optional BSD (Blind Spot Detection) can address the issue of blind spots caused by the driver's restricted rearview mirror view. It includes a pedestrian observation system, providing an additional layer of protection for the driver.

Driver Monitoring System (DMS)

The DMS camera has the ability to alert for fatigue driving and distracted driving behaviors such as making phone calls, yawning, smoking, etc, as well as to detect situations where the driver is not in the correct position. Real-time monitoring of driver information to ensure driver safety

4-CH Camera

It is equipped with a 135° camera inside the vehicle and a 110° camera outside the vehicle, located respectively at the front of the vehicle and inside the cabin. It can promptly observe information both inside and outside the vehicle. You can also choose to install 3/4 of the external driver monitoring system cameras, and the video playback adopts the encrypted MP4 format.



Note: Peripheral cameras are sold separately.



SOS Call Button



GPS/BD



WEB page settings



CMSV 6



**FDD-LTE/WCDMA,
TD-LTE, FDD-CTLTE**



**Advanced Driver
Assistance System**



G-Sensor



WI-FI Location



Driver monitoring system



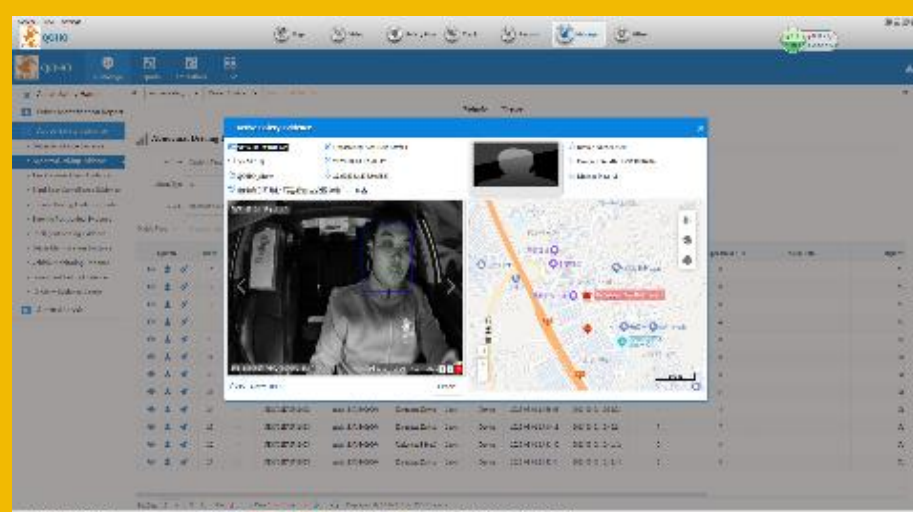
4-CH 1080P



**2TF card
max 512GB**



Blind spot detection system

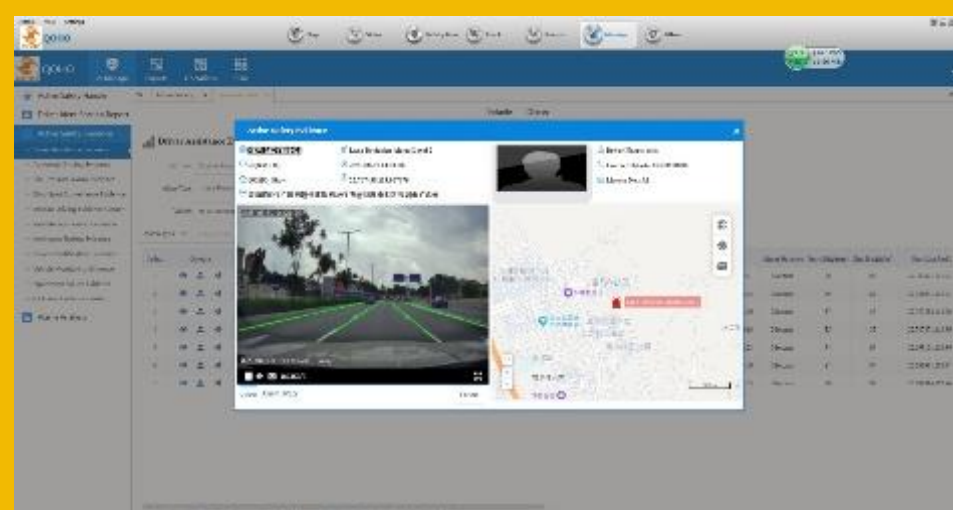


Driver Monitoring System (DMS) – Real-Time Safety at Work

The MDVR8102S integrates a **Driver Monitoring System (DMS)** designed to improve road safety by keeping a watchful eye on driver behavior. Using a built-in cabin camera and intelligent detection algorithms, the DMS continuously monitors for signs of distraction, fatigue, or risky driving habits.

Advanced Driver Assistance System (ADAS) – Smarter, Safer Driving

The MDVR8102S is equipped with an **Advanced Driver Assistance System (ADAS)** that helps prevent accidents by actively monitoring the road environment and providing real-time warnings. Using a forward-facing HD camera and intelligent analysis, ADAS identifies potential dangers before they turn into critical events.





Features	Specifications	Applications	Accessories
----------	----------------	--------------	-------------

General

SOC:
Novatek 98323
dual core + NPU
positioning system:
GNSS+BS
Operating Voltage:
12-36V vehicle
systems

Power

Working mode:
8-36V, lower
consumption
Standby mode:
12V,10mA: When
vehicle been crushed
on standby mode,
alarm information
would be sent to
manager' s mobile
phone and device
would start recording
in 10 seconds

PC Client

2-CH or 4ch
channels video
playback;
Track playback;
Android and IOS
version;
Support CMSV6,
Wailon, and
SDK/API
integration with
third party
platform

MDVR Player

industrial encrypted
video format,
convert into MP4
video format,
convenient for
sharing intercepted
videos

GPS-TIME

Built-in GPS
module and
antenna to make
sure accurate
position and time

NET/4G

Built-in 4G
module and
antenna, FDD-
LTE/WCDMA,TD-
LTE,FDD-CTLTE
optional

WIFI-AP

Built-in WIFI module and
antenna; AP mode in
default, phone connect
directly with device and
can switch to WIFI mode
after set well the
parameters .Support
WIFI downloading.

Alarm

Press SOS button,
upload picture or
video to server
(optional)

Language

Video compression:
AHD H.265
compression
Chinese, English
or others (can be
customized)
Clear sound quality:
Support send
broadcast text
content
remotely, intercom
two-way

4CH-AI

Built in camera 1:
1080P ADAS
camera
Built in camera 2:
1080P 130 degree
cabin wide view
camera
External Camera:
CH3 or CH4 can
connect BSD or
DMS Camera

OSD

Optional OSD
information (CVBS on
Monitor or CMS client):
Time, channel name,
company name, driver
name, plate number, GPS
position, speed, G-sensor
Harsh Braking, Harsh
Acceleration, Harsh
Concerning, Over speed)

Recording

Support CMS
platform back-up,
mobile phone local
downloading/playback,
History
recording via
MDVR player
software.

Input/Outputs

2*I/O Alarm output
1*I/O Alarm Output
(5V)
RS232 Interface
for
Fuel/Temperature
/Oxygen Sensor
RFID Reader...etc

G-sensor

automatically
correcting and do
not limit the
installation
direction of the
equipment

Storage

Two TF card
slot, Support 2
max 512G TF cards
each slot

Features

Specifications

Applications

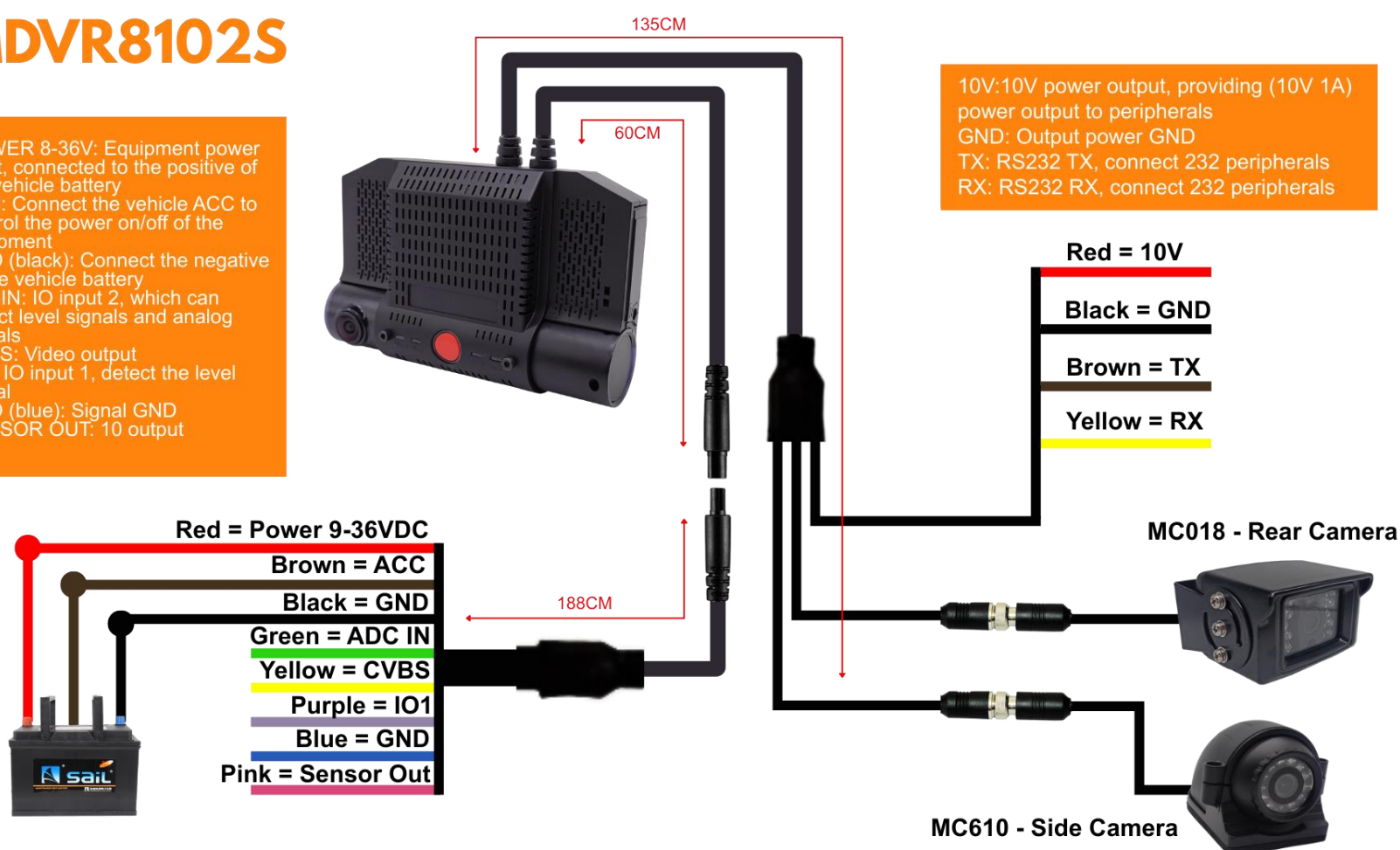
Accessories



INSTALLATION

MDVR8102S

POWER 8-36V: Equipment power input, connected to the positive of the vehicle battery
 ACC: Connect the vehicle ACC to control the power on/off of the equipment
 GND (black): Connect the negative of the vehicle battery
 ADCIN: IO input 2, which can detect level signals and analog signals
 CVBS: Video output
 IO1: IO input 1, detect the level signal
 GND (blue): Signal GND
 SENSOR OUT: 10 output



APPLICATION



Car



Transport Bus



Mini Truck



Van

Features

Specifications

Applications

Accessories



3M adhesive



Lock-picking key



Power supply tail wire



CVBS Power tail wire



Spanner



CVBS